

SUN CITY LINCOLN HILLS PRESERVE

Trail Usage Policy and Map (March 14, 2023)



WILDLIFE
HERITAGE
FOUNDATION

The Sun City Lincoln Hills (SCLH) Preserve is conserved for the protection of wildlife, wetlands, and other natural resources, and a perpetual conservation easement is held by Wildlife Heritage Foundation (“WHF”) over the entire Preserve. Because the purpose and priorities of the SCLH Preserve differ from other trails and open space areas within the SCLH community, recreational uses are permitted only to the extent that they do not impact or impair the Preserve’s conservation values in WHF’s professional opinion. In the context of the foregoing, the following permitted uses and prohibitions apply to the SCLH Preserve trails:

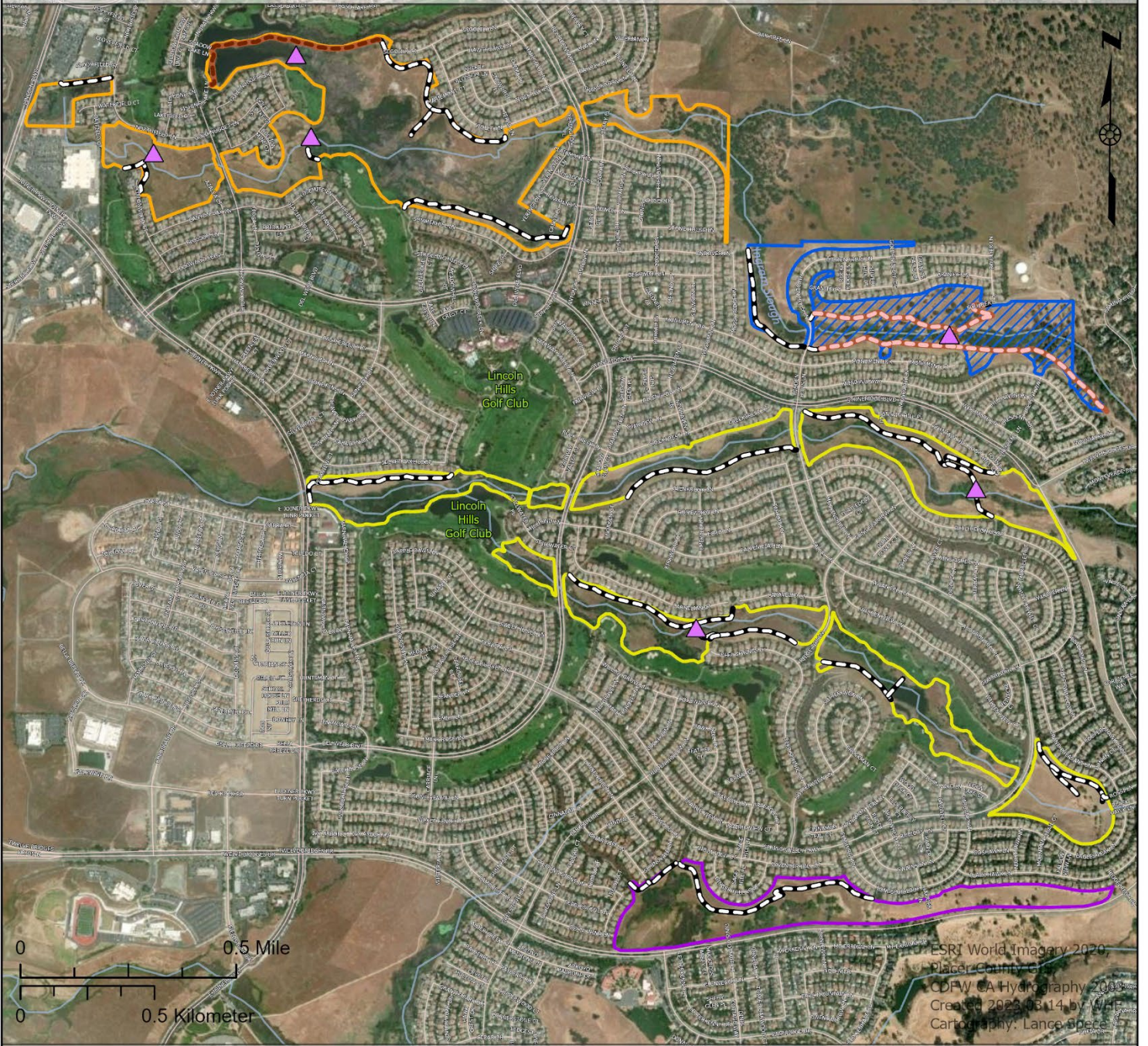
1. **Trail Allowable Uses.** With the exception in #3 below, only low-impact uses are permitted on SCLH Preserve trails by individuals or small groups to avoid and reduce impacts to the natural resources. Low impact uses are walking, jogging, and the use of bicycles, tricycles, and e-bikes. Electric wheelchairs and scooters used by individuals with mobility limitations are allowed.
2. **Motorized Vehicles Prohibited.** Motorized vehicles are prohibited (e.g., motorbikes, ATVs, and golf carts) on all trails.
3. **Trails in the Northeast Preserve East and South of Hidden Hills Lane Allowable Uses.** The Canyon Oaks and Elderberry trails are predominantly unpaved trails where only walking and jogging are permitted by individuals or small groups to avoid and reduce impacts to sensitive natural resources.
4. **Dogs.** On-leash dogs are permitted on paved and unpaved trails. Off-leash dogs are prohibited on all trails to protect the wildlife and habitat within the SCLH Preserve.
5. **Drones.** Drones and unmanned aerial equipment are prohibited in the SCLH Preserve.
6. **Wildlife and Natural Resource Protection.** Wildlife may not be harassed, moved, trapped, or disturbed, nor may plants, rocks or other natural items be removed from the SCLH Preserve.
7. **Stay on the Trail.** Users must stay on the trails at all times. The SCLH Preserve does not allow any use of, or access into, the off-trail protected wildlife habitat areas.
8. **Residents and Guests Only.** The trails are limited to Sun City residents and their guests. Residents are responsible for ensuring their guests follow this Trail Usage Policy.
9. **Trail Courtesy.** To prevent conflicts between people engaged in different activities, users must be courteous of other users at all times. Trail courtesy practices are:
 - a. Do not be more than two abreast when walking, jogging, or bicycling.
 - b. All parties should readily make room for other users by moving to single file progression (while staying on the trail) so that others may pass (while also staying on the trail).
 - c. Bicycles on trails should not be moving so fast or recklessly that walkers or joggers are disturbed or startled into jumping aside.
10. **Trail Closures.** On occasion, trails or portions of trails may be closed or certain uses prohibited due to environmental conditions or periods of sensitivity, such as nesting season by ground-dwelling birds. If this were to occur, WHF will visibly post signs noting the restrictions on trail use.






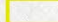



Land management and monitoring activities by the staff of, or sub-contractors to, SCLH Community Association or Wildlife Heritage Foundation are exempt from the provisions in this Policy, including the use of motorized vehicles.

WHF will continue to inspect and monitor the SCLH Preserve closely. We reserve the right to modify, eliminate, or further condition uses in all or portions of the SCLH Preserve at any time.

Sun City Lincoln Hills Preserve Trail System

Placer County, CA



-  Paved Trail
-  Unpaved Trail
-  Unpaved Trail/Pedestrian Only
-  Bridge Trail Crossing
-  Seep Preserve
-  Orchard Creek Preserve
-  Ingram Slough Preserve
-  Northeast Preserve
-  Northeast Preserve
East & South of Hidden Hills Ln.